

Trails Croda Rossa (Summer 2024)

WITHOUT LIMITATIONS

To the open-air museum of the First World War Anderter Alpe

From the mountain station (marked 100) and possible return via "Rotwandköpfe" (100) to the mountain station (medium difficulty - not suitable for strollers)

Through the forest „Kuhwald“ to the Fiscalina Valley

From the mountain station (124) to the "Dolomitenhof" parking lot and through the Fiscalina Valley meadows (102) to the Bad Moos valley station (medium difficulty - not suitable for strollers)

Through the Croda Rossa valley to Bad Moos

From the mountain station (153) descend through the valley to the "Dolomitenhof" parking lot and continue through the meadows of Val Fiscalina (102) to the parking lot in Bad Moos (medium difficulty - not suitable for strollers)

Trail to Passo Monte Croce

From the mountain station through Prati di Croda Rossa (18-19) to Trail 15, which passes at the foot of Burgstall and leads to Passo Monte Croce (medium difficulty - not suitable for strollers)

Strada degli alpini - Forcella Undici

Dalla stazione a monte (100) via Anderter Alpe e salita alla Forcella Undici fino alla via ferrata Strada degli alpini (difficoltà difficile - non adatto a passeggeri)

Strada degli alpini - Forcella Undici

From the mountain station (100) via Anderter Alpe and ascent to Forcella Undici to the Strada degli alpini via ferrata (difficult difficulty - not suitable for baby carriages)

WITH RESTRICTIONS (construction site and construction site traffic)

Family circular route Prati di Croda Rossa

From the mountain station (18-19) through the "Porzen" construction site in the direction of Schellabalm and back through the "Porzen" construction site via Rifugio Prati di Croda Rossa or Rifugio Rudi to the mountain station (easy difficulty - suitable for strollers)

To Moso via the Signaue

From the mountain station (15 - 17) descend to the mountain station of the Signaue cable car and continue in the direction of the Rifugio Pollaio to Bad Moos or Moso (easy difficulty - suitable for strollers)

To Passo Monte Croce

From the mountain station (18-19) via the "Porzen" construction site to the Schellabalm and the Passo Monte Croce (bus stop with return service to Bad Moos) - easy difficulty - suitable for strollers

The same applies to hikers from the Passo Monte Croce to the Prati di Croda Rossa

BIKE ROUTES WITH LIMITATIONS

From Passo Monte Croce Pass to Prati di Croda Rossa (18-19) - route crosses construction site - caution advised

From Prati di Croda Rossa to Passo Monte Croce (18-19) - route crosses construction site - caution advised

From the mountain station via the Standschützen trail to the Rifugio Pollaio and then to Bad Moos - the route crosses the construction site - extreme caution is recommended

From the mountain station in the direction of Signaue, Moso, Bad Moos (15 - 17) - constant construction site traffic is expected - caution is recommended

CLOSED

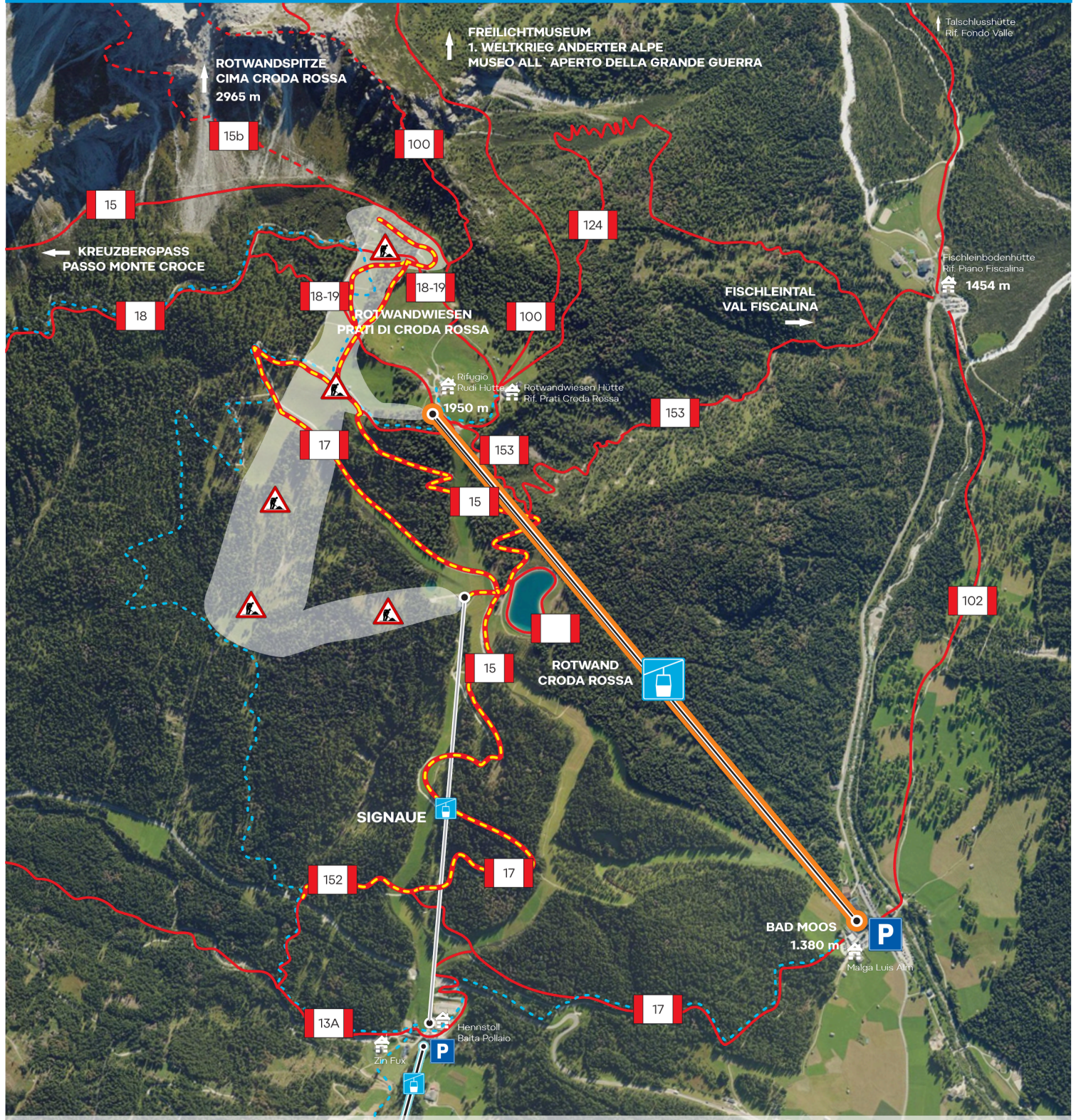
No bike or hiking routes are closed due to the construction site at "Porzen"

NEW

WINTER SEASON 2024|25



WIR BAUEN FÜR EUCH DIE 6ER SESSELBAHN „PORZEN“
COSTRUIAMO PER VOI LA SEGGIOVIA 6 POSTI „PORZEN“
WE ARE BUILDING THE 6-SEATER CHAIRLIFT „PORZEN“ FOR YOU



Baustelle „Porzen“
Cantiere „Porzen“
Construction site „Porzen“



Du befindest dich hier
Ti trovi qui
You are here



Wanderwege mit Baumaschinenverkehr
Sentieri con traffico di macchinari di costruzione
Trails with construction machinery traffic



Wanderweg
Sentiero escursionistico
Hiking trail



Klettersteig
Via ferrata
Climbing trail



Mountainbike Route
Percorso Mountainbike
Mountainbike trail